

Welcome to Shelter WA's first newsletter for 2013. This year is already moving faster than anticipated. We are already in the second month, with an election in March. There have been disasters all over the country, in the form of fires and floods. We commiserate with those who have lost loved ones, housing and livelihood through these occurrences, whilst also acknowledging the actions of rescue volunteers, SES and other emergency services in affected areas. Our thoughts and hearts are with those affected by these natural disasters all over the country.

### Shelter WA Policy Platform 2013-2015

### Housing in WA: Affordability & Sustainability for the Future

MEDIA RELEASE: 29-Jan-2013

## Make Housing Top Election Issue

Just 0.5% of private rentals are affordable for low-income households, 9,500 people are homeless in WA and of those fortunate enough to have a home in WA, and 43% of those on a low income are in housing stress.

"It's a sad reflection in a State as prosperous as WA, and the [Shelter WA Policy Platform 2013-2015 Housing in WA: Affordability and Sustainability for the Future](#) spells out some solid policies to address this," said Shelter WA Executive Officer Chantal Roberts.

The Policy Platform hinges around a central call for one State Minister responsible for Housing, Homelessness and Urban Development.

"In short it makes no sense to separate housing, homelessness and planning," said Ms Roberts. "Coordination and reform are key to addressing the basic need for shelter in WA."

"This should be a major election issue. I cannot think of a more important one in ensuring that this most basic of human needs – shelter - is affordable and available for all West Australians. Ignoring the issues has far reaching consequences even to those who believe it does not affect them."

"There is no doubt that everyone in WA knows someone experiencing housing stress, they may just not be aware that this basic daily struggle is going on. Housing stress makes it difficult for families to put food on the table, and to hold a family unit together successfully. Homelessness impacts on all areas of the person's life, and makes it difficult to engage meaningfully in society."

In short Shelter WA's policies propose that:

- The WA Government appoint a single Minister for Housing, Homelessness and Urban Development;
- Stamp duty is abolished in favour of a more equitable land tax;
- Urban planning amendments are prioritised;
- Reform of the private rental sector is undertaken through an improved investment mix and enhanced rental supports;
- The social housing sector is expanded; and
- Homeless services are restructured and enhanced, and marginal housing improved.

"The WA Government has implemented a number of good initiatives that begin to address this, but to really tackle the issue we as a society – led by government in partnership with the private and non-profit sectors - need to take responsibility for real and lasting change, through reform and expansion."

Media contact: Chantal Roberts, Executive Officer, [eo@shelterwa.org.au](mailto:eo@shelterwa.org.au)

Shelter WA will be holding an [Election Forum](#) on 13 February 2013, 1.30-4.00 pm, at Claisebrook Lotteries House, for election candidates to put forward their policy proposals on housing and homelessness.

For a copy of Shelter WA's Policy Priorities Synopsis, click [here](#) or for the full Policy Platform, click [here](#)

## Announcing Appointment of Shelter WA Patron, Lynne Evans

Shelter WA is proud to announce the appointment of Lynne Evans as Shelter WA Patron. Shelter WA is greatly honoured by Lynne's acceptance to our patronage request and we look forward to working closely with this respected member of the homelessness sector.

Lynne Evans is the former CEO of St. Bartholomew's House (until late 2012). During Lynne's time in that position, she steered the growth, governance and quality improvement of St Barts' Specialist Homelessness supported accommodation, residential and community aged care. She also facilitated the expansion of supported accommodation for people living with mental illnesses including the commissioning of multi-site living units.

Her enthusiasm, energy and 'can do' attitude have made St Bartholomew's House the vibrant, caring organisation it is today.

Lynne's indefatigable efforts are also responsible for the achievement of the new \$32 million dollar, 148 bed St Bartholomew's House Lime Street East Perth building, completed just prior to her retirement. This was the culmination of Lynne's vision for new corporate offices and increased and improved accommodation services for people experiencing homelessness.

Lynne has contributed her time for many years on various boards, committees and task forces, and currently sits on the Board of Homelessness Australia as the WA representative. She also continues her involvement in other community projects, including an exciting health steering group to improve health care for people experiencing homelessness in a range of accommodation facilities.

We look forward to the enrichment Lynne's insights and expertise will bring to Shelter WA.

## Welcome to New Shelter WA Board Members

Shelter WA's Board of Management has gone through some changes since our AGM in October 2012. Several new members have joined the Board. We formally welcome Leanne Strommen, Executive Manager Centrecare Inc.; Kendal Head, Manager Red Cross; Gary Robins, individual member; and Professor Paul Flatau, Director Centre for Social Impact UWA. The addition of these representatives will further boost Shelter WA's Board of Management and the knowledge and expertise they bring to the work of the organisation is valued by the staff.

The Board would also like to thank former members, Juanita Barron and John Hollywood, for their commitment, input and enthusiasm during their time on the Shelter WA Board of Management. We wish them both all the best in any endeavours they pursue, and deeply appreciate their dedication to homelessness issues and affordable housing. Thank you also to ongoing Board members for their contribution and support.

## Shelter WA Submissions, Resources and Projects

*Shelter WA is currently working on the following submissions and projects. If you have any issues or concerns you would like us to consider when preparing our submissions or you wish to attend a forum contact Stephanie at [cdpo@shelterwa.org.au](mailto:cdpo@shelterwa.org.au) or phone 9325 6660.*

### Shelter WA Housing Options Kit

With the high cost of housing in WA, it is important that people have useful, accurate information to find the right kind of affordable accommodation. People need to know what to consider and where to go for assistance in seeking crisis or supported accommodation, renting in social housing or the private rental market, and in purchasing a home. The free Housing Option Kit will help them do just that.

There are many valuable services and housing providers in WA aimed at assisting people experiencing homelessness, people on low incomes, or who are otherwise disadvantaged in the housing market. However, it is often difficult for people to know where to go – and for service providers to know where to send their clients. The Housing Options Kit will build awareness of the services available and help connect people to the appropriate service.

The free kit will be particularly useful to service providers working with people in need of housing, or in need of transitioning from one type of tenure to another such as out of crisis accommodation and into social housing, or from a private rental into affordable home ownership.

The paper copy of the guide was mailed to organisations in the housing and homeless services sector. It is also available electronically on the Shelter WA website [www.shelterwa.org.au](http://www.shelterwa.org.au).

[Click here for the Shelter WA Housing Options Kit](#)

## State Planning Strategy Shelter WA Submission

Shelter WA is currently compiling a submission in response to the State Planning Strategy (Draft) 2012. The strategy was prepared by the Department of Planning, under the guidance of the Western Australian Planning Commission (WAPC) to meet the future planning challenges and opportunities in relation to: economic development; education; training and knowledge transfer; tourism; environment; agriculture and food; physical and social infrastructure.

The strategy presents a vision for Western Australia to 2050 and beyond based on a framework of planning principles, strategic goals and State strategic directions. The document can be found on WAPC's website at <http://www.planning.wa.gov.au/publications/6561.asp>.

This is a very important document for the future planning of Western Australia, and Shelter WA is committed to providing an extensive response in relation to the issues of Affordable Housing and Homelessness. If you would like to provide feedback to be incorporated into our response, any comments can be forwarded to Robert Gough at Shelter WA at [prac@shelterwa.org.au](mailto:prac@shelterwa.org.au). Feedback will be accepted by Shelter WA up until the 22<sup>nd</sup> March 2013, as we will be finalising our response after this time, to submit to the Department of Planning by the 29<sup>th</sup> March 2013 deadline.

If you would like to take part in any of Shelter WA's surveys, please click on the links below:

[Young People Housing & Homelessness Survey](#)

[Affordable Housing Survey](#)

[Renting in WA Survey](#)

[Feedback on the Disruptive Behaviour Management Strategy](#)

## Shelter WA Affordable Housing Network

### 2013 State Election Forum

### Housing & Homelessness

Wednesday, 13 February 2013, 1:30 – 4:00pm

Conference Room, Claisebrook Lotteries House, 33 Moore St, East Perth

Shelter WA invites you to attend our 2013 Election Forum on Housing and Homeless as part of our regular Affordable Housing Network. Shelter WA has invited candidates from each major party to outline their policies in relation to housing and homelessness and how they intend to address the current and ongoing housing crisis in WA. Each speaker will have 30 minutes, including questions.

#### Confirmed Speakers;

**Hon Lynn MacLaren MLC, Greens WA**, Member for South Metropolitan Region, Legislative Council

**Hon Bill Johnston MLA, Labor Party WA**, Member for Cannington, Shadow Minister for State Development, Energy, Housing, Planning

*Further speakers to be confirmed*

**BOOK NOW as places are limited**

Please RSVP by Friday 8 February 2013 to Stephanie on 9325 6660 or email [cdpo@shelterwa.org.au](mailto:cdpo@shelterwa.org.au)

# News and Updates

## Tenant Advice Line Western Australia

The **Tenant Advice Line Western Australia** is now up and running and has taken its first calls. This service replaces the state wide telephone advice line run by the now closed Tenants Advice Service WA.

The new service will operate from SCALES Rockingham office until the Department of Commerce finalise the retendering of the Central Resource Unit of the Tenancy Advice and Education Service.

The Tenant Advice Line WA is a free state-wide advice line for all residential tenants (both public and private). There is no means or income test to access this service.

**Advice Line Numbers** 9221 0088 (Metropolitan) 1800 621 888 (Country callers – Free call)

**Advice Line Hours** 9.30am to 3.00pm Business days

Need an interpreter? Contact the Translating and Interpreting Services (TIS) on 13 14 50 – available 24 hours.

Please note this service is **not for landlords or corporate tenants**. Landlords may contact the Department of Commerce on 1300 30 40 54. Corporate tenants may contact the Small Business Development Corporation on 131 249.

Funding for the Tenant Advice Line comes from the Rental Accommodation Fund administered by the Department of Commerce. Our Tenant Advice Line workers provide information and support to people who are in Residential Tenancies, Public Housing or living in Park Homes. You can also get help with information about your rights and responsibilities as a tenant. Common issues for tenants are:

- "How do I get my bond money back?"
- The owner has sold the house. What does this mean for me?
- I received a breach notice. What does this mean?
- How do I end a fixed term tenancy?
- The owner is always dropping in without asking me first. Can they do this?
- The owner won't fix my...What can I do?
- The owner wishes to sell and wants home-opens. What are my rights?

The Tenant Advice Line often experiences heavy demand. If you are having problems getting through to an advice line worker try calling the **Department of Commerce's information line 1300 30 40 54** or **Legal Aid's Information Line 1300 650 579** or a [Tenant Advocate near you](#). Tenant advocates can help tenants with such things as information and advice, writing letters, applications to the Department of Housing and going to court.

The **Department of Commerce** ([www.commerce.wa.gov.au](http://www.commerce.wa.gov.au)) is a State Government department with responsibilities and functions under the Residential Tenancies Act 1987 (WA). These responsibilities include the provision of information and advice to tenants and owners, as well as conciliation functions in disputes between owners and tenants.  
**Advice Line: 1300 304 054; TTY: 9282 0800**

**Legal Aid WA** provides a free telephone information service on legal problems including tenancy ([www.legalaid.wa.gov.au](http://www.legalaid.wa.gov.au)). **Information Line: 1300 650 579; TTY: 1800 241 216**

[For more information visit the SCALES website here](#)

## Call for Contributions February 2013 Health and Homelessness Revisited Edition of Parity

This edition of Parity is sponsored by the Australian Government.

The aim of this edition of Parity is to focus on the nexus between health and homelessness by to examining how health issues impact on homelessness and likewise how homelessness can have serious negative impacts on the health. A further aim of the edition is to examine and discuss the response of specialist health, homelessness and other mainstream services to the range of health issues that affect people experiencing homelessness.

In addition this edition of Parity will examine and discuss how both national, state and territory homelessness policies, strategies and plans have responded to the health issues experienced by those who are homeless and especially the role that health services play in responding to homelessness.

**All contributions need to be submitted by Friday 15 February 2013.**

If you have any questions at all about contributing to this edition please contact the Parity Editor by email at [parity@chp.org.au](mailto:parity@chp.org.au) or ring 03 8415 6200.

For more detailed information on referencing and writing guidelines for Parity refer to: [www.chp.org.au/services/parity-magazine/contribute-to-parity](http://www.chp.org.au/services/parity-magazine/contribute-to-parity)

## AHI is seeking contributions for the March 2013 edition of HousingWORKS

AHI are currently seeking **contributions** from members and AHI supporters for the March 2013 edition of **HousingWORKS**. The main theme of the issue will be **the role of tenants in social housing**. AHI welcome stories from housing providers, social services organisations and especially from tenants.

Please remember, you do not need to be a professional writer to publish interesting and valuable work - please read our [Contribution Guide](#). Articles should be submitted electronically by e-mail to [admin@housinginstitute.org](mailto:admin@housinginstitute.org). The **deadline** for the March 2013 edition is **20th February 2013**.

Please feel free to [distribute](#) this call for contributions throughout your networks and to anyone you think might be interested in contributing to this edition of the premier journal on social housing matters in Australia and New Zealand. All suggestions, final articles and images can be sent to [editor@housinginstitute.org](mailto:editor@housinginstitute.org)

## Discussion/Issue Papers, Submissions, Surveys, Petitions

### Survey Launched on Not for Profit Tax Concessions

A new Not for Profit survey on tax concessions has been launched in response to the Federal Government's NFP tax concessions discussion paper. National accounting firm, BDO, which works with Not for Profit clients says there is valuable opportunity for Not for Profits to help inform the reform agenda currently being considered by the government in relation to the Not for Profit sector.

The Federal Government [released the discussion paper](#) *Fairer, simpler and more effective tax concessions for the not-for-profit sector* in November 2012.

BDO says it launched the survey in order to gauge sentiment across the sector for the possible changes floated by the paper. BDO national tax director, Lance Cunningham, urged all Not for Profit organisations to participate in the survey and have their say on the discussion paper.

"The BDO survey provides an opportunity for Not for Profits to register their views about any changes to the tax concessions that currently apply to their organisations," Cunningham said.

"Based on the discussion paper that has been released, it is fair to say that the Federal Government is considering some fairly sweeping changes that may have significant implications for Not for Profit organisations.

"We're encouraging any organisations that may be affected to complete the survey, especially those who were unable to make a submission to the working group before they closed late last year."

Among the changes being considered by the Federal Government's working group are changes to the limit for deductibility for donations, changes to Fringe Benefits Tax concessions and limiting the entities eligible for deductible gift recipient status.

The BDO [NFP Tax Concession Survey](#) will close on **February 8, 2013**. [Treasury Website](#)

## Awards, Grants, Tenders and Funding Opportunities

### Australian Securities & Investment Commission Unclaimed Money Website

Are you owed money? There is more than \$670 million in lost shares, bank accounts and life insurance.

Visit the ASIC Money Smart website which lists lost money via bank accounts, lost shares and life insurance: <https://www.moneysmart.gov.au/tools-and-resources/find-unclaimed-money/unclaimed-money-search> .

### ConnectGroups the Pay It Forward Plan

The Pay it Forward Plan (PIF) was launched at our National Awareness Day in September, 2012. PIF is a new grants program to assist Self Help and Support Groups get the necessary things they need to have a positive impact on the mental wellbeing of their 'family' and ensure their group's sustainability and continued good work for all.

ConnectGroups received nearly 40 submissions and overall, \$123,590 has been allocated to groups across WA. The great news is that we have a small amount of funds available for a 2nd ROUND in February. For a copy of the new PIF Grant Applications, email [lisa@connectgroups.org.au](mailto:lisa@connectgroups.org.au).

[Click here](#) to read more about this initiative. [Download the Grant Submission forms](#).

**Submissions due by 15 February 2013.** <http://www.connectgroups.org.au/>

## Outstanding young people and youth workers sought for 2013 WA Youth Awards

Western Australian residents are encouraged to nominate an outstanding young person for the annual WA Youth Awards.

The awards, now in their 15<sup>th</sup> year, were established in 1999 to recognise outstanding young Western Australians aged 12 to 25 years.

In 2013 the WA Youth Awards are proudly presented by the Department for Communities in partnership with the Youth Affairs Council of Western Australia. The awards are supported by Lotterywest.

Entering a young person in the WA Youth Awards is a great way to showcase their strengths, abilities and achievements to the wider community and give them the recognition they truly deserve for their efforts.

Western Australians are encouraged to nominate outstanding individuals and/or groups in any of the following categories:

- Minister for Youth's Most Outstanding Youth Worker Award
- Innovate! BHP Billiton Award
- Motivate! Woodside Award
- Recreate! Cadets WA Award
- Create! Propel Youth Arts Award
- Educate! Edith Cowan University Award
- Participate! Commissioner for Children and Young People Award

Category winners will receive \$2,000, and the WA Young Person of the Year will receive two return tickets to a European destination courtesy of the Department for Communities – Youth and Singapore Airlines.

Journalists and photographers will also be recognised for reporting on young people and youth issues through the 2013 Communicate! WA Youth Media Awards.

For more information or to nominate, go to [www.communities.wa.gov.au/youth](http://www.communities.wa.gov.au/youth) or call 6551 8700 or [click here for Nomination Form](#)

**Entries close 22 February 2013**

## Community Grants Program

The Office of Multicultural Interests' (OMI) vision is an inclusive and cohesive society drawing on the cultural and linguistic diversity of its people to enhance the social, cultural and economic development of the State.

The Community Grants Program (CGP) objectives support the OMI Strategic Plan by encouraging participation, equity and promotion of all Western Australians in projects and events that remove barriers and enhance cross-cultural engagement.

For more information about the CGP Grant Writing Workshop contact the Grants Officer at OMI on (08) 6552 1463 or by email on [grants@omi.wa.gov.au](mailto:grants@omi.wa.gov.au).

CGP Grant Writing Workshop, 5.30 – 8.00pm Tuesday 5 February 2013 (RVSPs essential to the Grants Officer by 5.00pm Wednesday 30 January 2013)

**CGP February round closes 4:00pm, 25 February 2013**

For more information visit [http://www.omi.wa.gov.au/omi\\_grants.cfm](http://www.omi.wa.gov.au/omi_grants.cfm)

## 2013 Grants for Women Now Open

The 2013 Grants for Women program has opened, with up to \$5,000 available to eligible organisations for projects and activities that encourage the engagement of Western Australian women in the community. Funding is available for projects that:

- Strengthened the health and wellbeing of women
- Encouraged women's economic wellbeing
- Encouraged women's leadership
- Encouraged women's sense of safety in the home or community

Guidelines and application packs are available at <http://www.communities.wa.gov.au>.

**Applications close 8 March 2013**

## 2013 'One Sky, Many Paths' Indigenous Youth Leadership Program

Do you know an Aboriginal young person who would like to participate in a successful leadership program?

If so, then nominate them for the One Sky, Many Paths program.

One Sky, Many Paths is an Aboriginal leadership program for young people, developed by Aboriginal people, that has been running for three years.

This program is delivered by Challenger Institute of Technology and receives funding support from the Department for Communities. The program is free to eligible people (however participants must register with Abstudy).

The program consists of:

- two one-week residential conferences in Fremantle
- on-line learning, with support from a local mentor
- a community project that you will plan and run over a 14-week period.

After completing the program they receive a Certificate II in Leadership Development.

The next course will be held from April to July 2013. You can find information about One Sky, Many Paths and an application form below.

<http://www.communities.wa.gov.au/YOUTH/PROGRAMS/OSMP>

If you know someone aged between 18 and 25 years who would like to participate in One Sky, Many Paths, please nominate them, and then make sure they complete an application form and send it in by **22 March 2013**.

Further information about the program can be obtained by phoning Mr Peter Mann on 9599 8757 or emailing [peter.mann@challenger.wa.edu.au](mailto:peter.mann@challenger.wa.edu.au)

## Please be Part of National Close the Gap Day 2013: It's rewarding and it will help Close the Gap

Join Australia's largest-ever Indigenous health campaign by registering your National Close the Gap Day event (on or near 21 March 2013).

**It's rewarding. It's fun. We support you. And you will help Close the Gap.** [www.oxfam.org.au/national-day](http://www.oxfam.org.au/national-day)

850 National Close the Gap Day (NCTGD) events were held this year. But it's only with sustained public support over many years that we will Close the health Gap by 2030. In 2009, the Council of Australian Governments committed an additional \$1.6 billion in Indigenous health funding over the four years to 2013. This initial down-payment to Close the Gap has supplied many vital new programs and extra health workers.

**Your participation in NCTGD 2013 will help secure the next round of funding to improve Indigenous health. It's through active participation in events like NCTGD that we can best demonstrate ongoing community support and secure future commitments from all political parties to Close the Gap.**

We provide all the resources and guidance you need to run a successful event, so register now.

### What can I do?

1. First and most importantly, [register your own](#) workplace, community, school or home National Close the Gap Day 2013 event now.
2. Encourage your networks, including work colleagues in other offices, friends, family, community groups and local council to [register their own National Close the Gap Day events](#) too.
3. We have a range of images and logos that are available to promote National Close the Gap Day on your Facebook and Twitter profile. So click through to [www.oxfam.org.au/national-day](http://www.oxfam.org.au/national-day)

There is also specific Close the Gap materials available for schools so if you know any teachers or students, please pass this on to them too.

[www.oxfam.org.au/closethegap](http://www.oxfam.org.au/closethegap) [www.facebook.com/closethegapcampaign](http://www.facebook.com/closethegapcampaign)

## Government issues renewable energy challenge

The inaugural [Renewable Energy Technology Challenge](#) is the first of a series of Technology Challenges set by the Department of Commerce to address issues impacting Western Australians. This first challenge is looking for solutions to allow households in the Pilbara to connect domestic renewable energy systems to remote electricity grids in compliance with Horizon Power's technical specifications. The specific focus of this Challenge is the Pilbara so solutions need to be sufficiently robust to operate in the North West of Western Australia.

The inaugural Technology Challenge offers a cash prize of \$50,000 to the winner who can develop the best solution. A runner up will win \$10,000.

The call for applications for the [Renewable Energy Technology Challenge \(PDF\)](#) closes on **Friday 22 March 2013**.

## National Shelter: Ongoing social housing investment benefits wider community

National Shelter has welcomed a KPMG report declaring the overwhelming benefits of social housing investment through the 2009 economic stimulus plan, as well as the economic boost to the building industry.

The \$5.6 billion Social Housing Initiative was the single largest housing funding commitment in Australian history. The KPMG report showed that 19,700 new dwellings were constructed; exceeding targets by about 13 per cent, created about 9,000 full time and 14,000 part time jobs, and generated an additional \$1.5 billion per year of construction activity. The funding was also used to repair over 80,000 dwellings nationally and over 12,000 were upgraded to habitable housing.

Chairperson of National Shelter, Adrian Pisarski, said the report highlights the economic value of this most important social investment and that the community would further benefit from social housing investment.

“The Social Housing Initiative came at a time when the need for affordable housing was desperate for many Australians.”

“The KPMG report clearly demonstrates that the Social Housing Initiative was a step in the right direction, creating more opportunities for low income and homeless Australians and stimulating the construction industry.”

“I call on the Australian State and Territory Governments for continued investment in affordable housing and where the currently struggling building industry could gain greater benefits than 2009.”

“The National Shelter policy platform insists on the delivery of an extra 200,000 social and affordable rental dwellings by 2021.”

The SHI was a highly successful initiative. However, there has been little publicity about the outcomes of the initiative and the findings of the report. Additionally, despite the clear social and economic benefits of the SHI, there are currently no further additional funds allocated towards the provision of additional social housing.

The SHI represented the largest capital injection into social housing. However, if no further additional funds are provided to continue to grow social housing it will result in a decline in the overall provision of social housing. The KPMG report has already highlighted that with the completion of the SHI that the construction and activity levels of social housing have decreased to *below historical trends*.

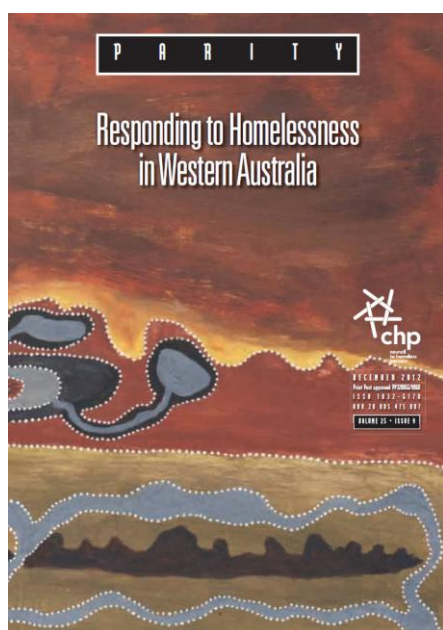
National Shelter continues to advocate for a growth fund in the National Affordable Housing Agreement (NAHA) for the provision of further social housing and the delivery of an additional 200,00 affordable housing dwellings by 2021.

Emma Greenhalgh, Project Manager, National Shelter, Ph: 0402 927 243

Please see 2012 National Shelter Policy Priorities, [Meeting Housing Challenges](#) for more policy recommendations.

A full copy of the KPMG Report can be found at <http://www.fahcsia.gov.au/our-responsibilities/housing-support/publications-articles/social-housing-initiative-review>.

## WA Edition of Parity launched at Curtin University on 12 December 2012



The WA edition of *Parity: Responding to Homelessness in Western Australia* was launched by the Minister for Child Protection, Community Services; Seniors and Volunteering; Women's Interests; and Youth, Hon. Robyn McSweeney, at Curtin University on 12 December 2012. Shelter WA's Executive Officer, Chantal Roberts, was a guest editor on this special WA edition, along with Paul Flatau and Robyn Martin. Parity is published by the Council to Homeless Persons.

One aim of this special edition was to develop a comprehensive and detailed resource for all those working in the homelessness, social housing and related welfare sectors. This resource examines and discusses all aspects of homelessness and the response to homelessness in Western Australia. An equally important aim was to provide all those involved in the response to homelessness in Western Australia the opportunity to actively participate in this project and contribute to the publication. It is clear from the contributions in this special WA edition that there is an overwhelming commitment to build and expand quality professional relationships between government and non-government organisations and practitioners. It is also evident there is considerable individual and collective effort to resolve homelessness in Western Australia.

Shelter WA would like to thank all contributors and sponsors to this very special edition of Parity, as well as the tireless work by Parity's editor, Noel Murray. To subscribe to Parity and obtain a copy of this important edition, log on to [www.chp.org.au/parity](http://www.chp.org.au/parity)



[Methodological News, Dec qtr 2012](#)

[Housing Finance, Australia, Nov 2012](#)

[Reflecting a Nation: Stories from the 2011 Census, 2012–2013 \(Additional Information\)](#)

[Australian Demographic Statistics, Jun 2012](#)

[Australian Social Trends, Sep 2012](#)

[Building Approvals, Australia \(Media Release\), November 2012](#)

[What's New in Regional Statistics, 2013?](#)

[Perspectives on Regional Australia: Population Growth and Turnover in Local Government Areas \(LGAs\), 2006-2011](#)

[Building Activity, Australia, Sep 2012](#)

[Lending Finance, Australia, Nov 2012](#)

[Selected Living Cost Indexes, Australia, Dec 2012](#)

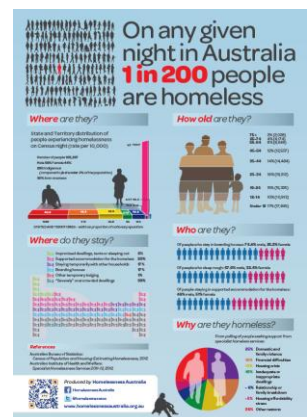
## Homelessness Australia Update

Homelessness Australia is currently updating their fact sheets to reflect the release of the 2011 census data. A full breakdown of statistics from the 2011 census can be found [here](#).

Want a copy of our info graphic?

Email [media@homelessnessaustralia.org.au](mailto:media@homelessnessaustralia.org.au) to request an e-version or printed copies.

Or visit their website: <http://www.homelessnessaustralia.org.au/site/issues.php>



## Australian Housing and Urban Research Institute (AHURI)

[Final Report No.199: The role of informal community resources in supporting independent housing for young people recovering from mental illness: a guide for housing policy-makers and practitioners](#)

[Final Report: No. 198: Cost-effective methods for evaluation of Neighbourhood Renewal programs](#)

[Final Report: No. 197: Resident third party objections and appeals against planning applications: implications for medium density and social housing](#)

[Positioning Paper: No. 151: Cost-effective methods for evaluation of neighbourhood renewal programs](#)

[Positioning Paper: No. 150 Downsizing amongst older Australians](#)

[Positioning Paper: No. 149 The Australian private rental sector: changes and challenges](#)

[Research and Policy Bulletin: Issue 158 How sustainable are Australia's contemporary affordable housing projects?](#)

[Research and Policy Bulletin: Issue 157 Service integration and Indigenous housing](#)

[Research and Policy Bulletin: Issue 156 How does the concept of social inclusion play a role in housing policy](#)

## 9th Annual Demographia International Housing Affordability Survey

A copy of the 9th Annual Demographia International Housing Affordability Survey is available [here](#)

## Victims of Crime Website

As a victim of crime, making decisions can be difficult and confusing. It is important to know how or where to get information and support. During this difficult time, it is vital that a victim is treated with courtesy, compassion and respect.

The Government of Western Australia is committed to responding to the needs of victims of crime, and those who are indirectly affected by that crime, such as families, friends and/or colleagues.

This [website](#) is an initiative of the Victims of Crime Reference Group and the State Government. It is designed to help victims of crime, their families and others by providing answers to the most commonly asked questions and issues encountered.



## Conferences, Events and Workshops 2013

7<sup>th</sup> Australian Housing Researchers [Conference](#) (Perth) 6-8 February

Remote Indigenous Housing, Social and Community Development [Conference](#) (Darwin) 27 February – 1 March

Green Cities [Conference](#) (Sydney) 6-7 March

Home-less & Home-first [European Conference](#) - SMES-Europa (Rome, Italy) 6-8 March

ACOSS National [Conference](#) (Adelaide) 25-26 March

National Youth [Week](#) 5-14 April

National Youth Homelessness Matters [Day](#) 10 April

PHAA National Social Inclusion & Complex Needs [Conference](#) (Canberra) 15-16 April

Third Sector [Expo](#) (Melbourne) 15–16 April

Council to Homeless Persons (CHP) [Conference 2013: A vision for ending homelessness](#) (Melbourne) 2-3 May

7<sup>th</sup> Australian Women's [Conference](#) *Gender Matters: Determining Women's Health* (Sydney) 7-10 May

AHURI National Urban Policy [Conference](#) (Sydney) 16-17 May

12<sup>th</sup> National Rural Health [Conference](#) (Adelaide) 7-10 April [Call for Abstracts](#)

International Homelessness Research [Conference: Advancing the Policy and Practice of Crisis Response Systems](#), (Philadelphia, USA) 3-4 June

Australasian Housing Institute (AHI) [Master Class Series People and Places](#) (Sydney) 5-6 June

Australian Health Promotion Association (APHA) 21<sup>st</sup> National [Conference](#) (Sydney) 17-19 June

4<sup>th</sup> Annual Affordable Housing Projects [Conference](#) (Kuala Lumpur Hilton, Malaysia) 17–19 June

5<sup>th</sup> International Community, Work & Family [Conference](#) *Changes & Challenges in a Globalizing World* (Sydney) 17-19 July

8<sup>th</sup> National Housing [Conference](#) (Adelaide) 30 October – 1 November

LSAC and LSIC Research [Conference](#) *Growing Up in Australia and Footprints in Time* (Melbourne) 13-14 November

## 7<sup>th</sup> Australasian Housing Researchers Conference, 6-8 February 2013 Perth

The Australasian Housing Researchers' Conference is a premier conference for housing researchers in Australia and New Zealand. The conference is an important annual event for housing researchers across Australasia, allowing delegates to discuss their research with their colleagues and peers. Shelter WA is a sponsor of the conference.

For more information or to register visit the website: <http://business.curtin.edu.au/research/conferences/ahrc13/>

## COTA WA Events

### [Ageing in Place Policy Forum](#)

11th February 2013, 2 –5 pm, City West Receptions, 45 Plaistowe Mews, West Perth

### [Making Informed Housing Decisions \(MIHD\) Seminar](#)

Friday 22 February 2013, 10:30 - 11:30 am, Woodvale Baptist Church, 67 Woodvale Drive, Woodvale,

Ph: 08993212133.

MIHD seminar provides an essential overview of the housing options available for Seniors covering key questions and information to ask for while contemplating changes. Some of the areas covered are retirement villages, strata titles, granny flats, home modifications, residential aged care and more. This seminar is presented by the Woodvale Baptist Church.

## Australasian Housing Institute (AHI) – WA Workshops 2013

The Australasian Housing Institute team has announced the first 2013 workshops which will be held in Western Australia in March 2013.

For more information click on the links below:

[Working with complex and demanding clients](#) Tuesday, 5 March 2013, Perth, WA

[Working with clients who have drug and/or alcohol dependency](#) Wednesday, 6 March 2013, Perth, WA

[Leadership Awareness](#) Monday, 25 March 2013, Perth, WA

[Positive Customer Service](#) Tuesday, 26 March 2013, Perth, WA

## Media Releases

### WA Government Media Releases

[Safe place opened to support mentally ill](#)

[Funding for affordable housing in Newman](#)

[Partnership to increase affordable housing](#)

[Free public transport for family carers](#)

[Seniors housing for Wheatbelt and Great Southern](#)

[Lotterywest supports Richmond Fellowship](#)

[Social enterprises receive funding grants](#)

[Alkimos Beach launches first sales](#)

[New online portal to benefit community sector](#)

[First home buyers benefit from \\$120m in grants](#)

[More Child/Parent Centres to support families](#)

[Locals catered for in Newman's latest land release](#)

[Developers sought for South Hedland land](#)

[New residential land released in Broome](#)

[WA families to benefit from \\$1.5m Ngala upgrade](#)

[New \\$1.4m Kalgoorlie-Boulder home for five with disability](#)

[First towns to benefit from \\$43.4million centres](#)

[New family violence legal service for Perth](#)

[Click here for a full list of the latest WA Government Media Statements](#)

## For a full list of recent Media Releases, please click on the links below:

- Australian Government <http://australia.gov.au/>
- Labor Party WA: <http://www.wa.alp.org.au/news/rss>
- National Party WA: <http://www.nationalswa.com/>
- Liberal Party Australia: <http://www.liberal.org.au/Latest-News.aspx>
- Greens Party WA: <http://greens.org.au/>

## Greens release plan for solar panels on every public housing home

The Greens have unveiled a \$68 million plan to slash the power bills of some of the state's poorest families and pensioners while cutting greenhouse gas emissions by 74,000 tonnes a year.

The plan would see 1.5kW solar systems installed on the roofs of every public and community housing dwelling across the state.

Housing spokesperson for the Greens Lynn MacLaren MLC said the initiative would help families and other public and community housing tenants by bringing down their cost of electricity by an average of \$500 a year.

"At the same time it will assist in bringing down the state's carbon emissions and boosting the solar energy industry in WA," Ms MacLaren said.

"It is a win, win, win situation.

"With a relatively small government investment we could provide a boost to the budget bottom line of thousands of pensioners and families while at the same time reducing the state's carbon emissions.

"We have around 22,000 public housing homes and apartments across WA and another nearly 8,000 community housing units. Their roofs could be used to assist householders in meeting rising utilities costs while at the same time reducing the state's growing carbon footprint.

"We have calculated that the cost of the project would be \$68 million spread over three years. The cost is based on \$2000 a roof plus around \$276 a home for a smart meter.

"WA has an abundant supply of sunshine so why don't we make use of the thousands of hectares of roof space on public and community housing to benefit the people who live in these homes and to bring down WA's carbon emissions."

Ms MacLaren said the plan was simple and relatively easy to implement.

"The Greens are about finding innovative solutions to the problems facing WA today and into the future."

*For further inquiries/interview: Lynn MacLaren 0403721951 [Media Release](#)*

*Media inquiries: Jane Hammond, Fremantle Freelance 0403926467*

## Useful links

[National Shelter](#)

[Federation of Housing Collectives WA](#)

[Homelessness Australia Newsletter](#)

[Council to Homeless Persons](#)

[Australian Institute of Health & Welfare](#)

[Community Housing Federation Australia](#)

[Community Legal Centres WA](#)

[Housing Industry Association Ltd](#)

[Real Estate Institute of Australia \(REIA\)](#)

[National Housing Supply Council](#)

[Pro Bono Australia](#)

[City Futures](#)

[Australians for Affordable Housing](#)

[WACOSS](#)

[Homelessness Clearing House](#)

[Australian Institute of Urban Studies WA](#)

[Communities and Families Clearing House](#)

[Community Housing Coalition WA \(CHCWA\)](#)

[Make My City Work Campaign](#)

[Australasian Housing Institute](#)

[Real Estate Institute of WA \(REIWA\)](#)

[Property Council of Australia](#)

[Australian Policy Online](#)

## Shelter WA Newsletters

Shelter WA publishes a monthly newsletter and welcomes your input. We accept articles, reports, new housing related and support services updates and information; and are happy to promote events, training etc.

If you require further information contact Stephanie on 9325 6660 or email [cdpo@shelterwa.org.au](mailto:cdpo@shelterwa.org.au)

If you wish to receive Shelter WA's Newsletters and Updates please click [Subscribe](#)

If you no longer wish to receive Shelter WA's Newsletters or Updates please click [Unsubscribe](#)