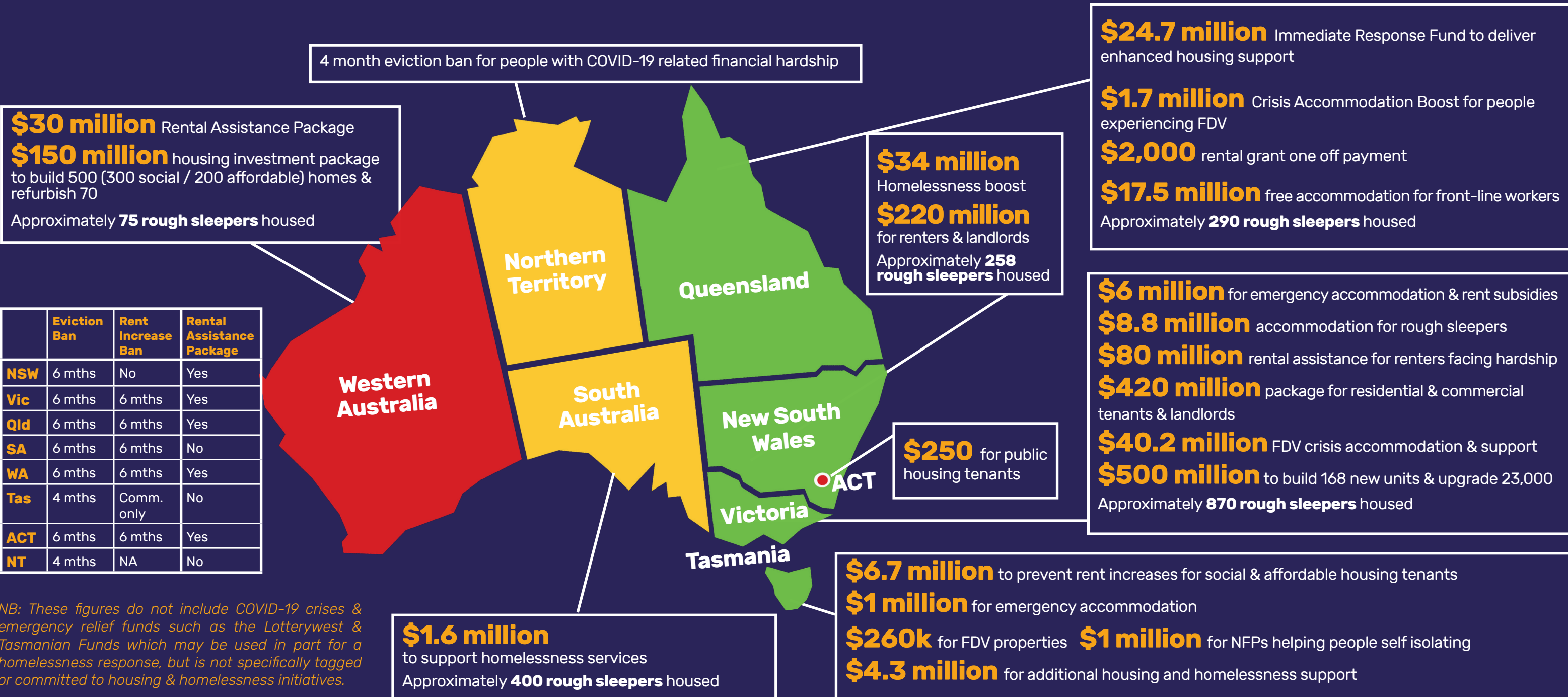


State and Territory Government responses

Bespoke packages specifically targeting affordable housing, rental & homelessness support in response to the COVID-19 pandemic



NB: These figures do not include COVID-19 crises & emergency relief funds such as the Lotterywest & Tasmanian Funds which may be used in part for a homelessness response, but is not specifically tagged or committed to housing & homelessness initiatives.