

# information sheet

## The Housing Advisory Committee

The Housing Advisory Committee (HAC) is an advisory body to the Minister for Housing and Works. Its role is to advise the Minister on housing policy, to participate in the development of Department of Housing and Works policy and program initiatives, to advise on research and the development of new policies and to assist in identifying housing needs in the community.

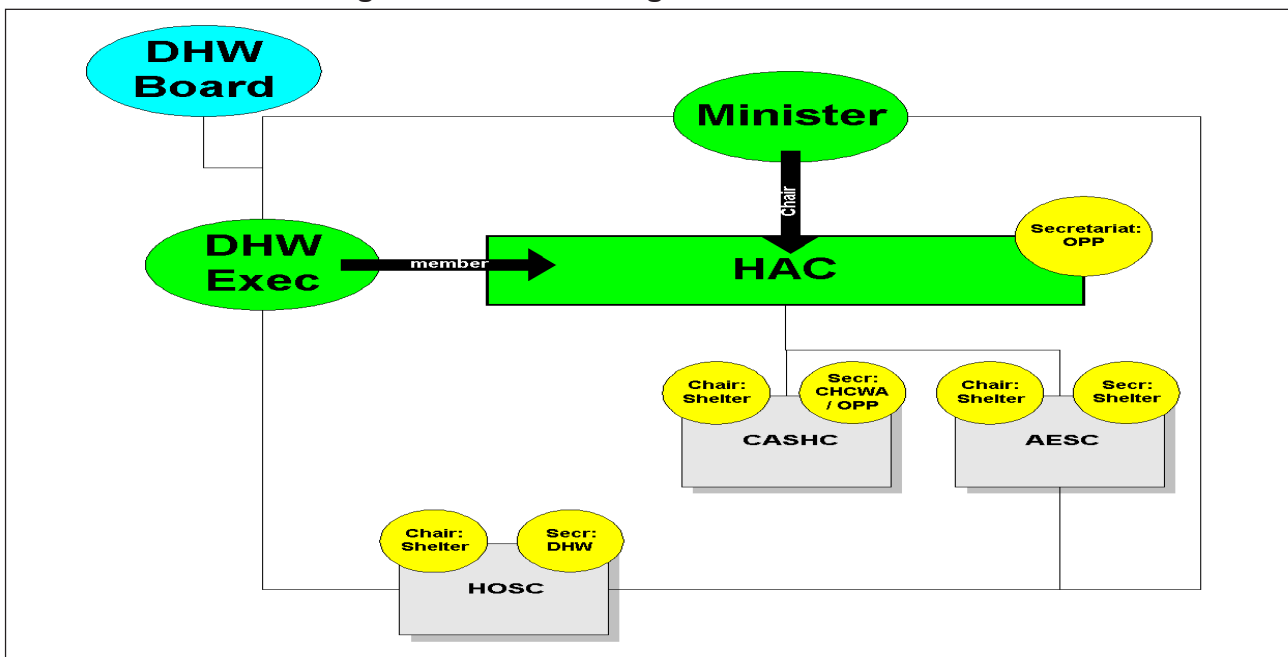
Recently, the HAC was reviewed. **Key outcomes of the review were:**

- ◆ The Minister now chairs HAC (instead of an independent chairperson),
- ◆ The role of HAC has become more strategic; eg. acting as a steering committee for the State Housing Strategy,
- ◆ The three existing, tenure based Standing Committees (Rental Sector SC, Community Housing SC and Finance and Home Ownership SC) have been abolished, and
- ◆ Three new Standing Committees have been created: Community Affordable and Sustainable Housing SC, Access & Equity SC and Homeswest Operational SC).

The new Standing Committee structure is outlined in the diagram below. In brief, the new structure has addressed a number of issues, including:

- ◆ Establishing a separate Standing Committee to deal with Homeswest operational issues (HOSC),

Diagram: New Standing Committee Structure



- ◆ Dividing the workload more equally between the various Standing Committees compared to the current structure, and
- ◆ Homeswest operational issues are no longer presented to HAC directly.

A joint Meeting of HAC Standing Committees was held on 5 February 2003, and delineated the responsibilities of the three Standing Committees, including their Terms of Reference and membership. While the Terms of Reference for the CASHC are still being finalised, the role of the three new Standing Committees is outlined briefly below. All three Standing Committees started operating in mid March.

### ***Homeswest Operational Standing Committee (HOSC)***

The role of HOSC is to identify and develop operational and low level policy issues associated with the State Housing Commission, Homeswest.

HOSC works with representatives from Homeswest to improve outcomes for public housing consumers. Wherever possible, recommendations made by HOSC will be implemented directly by Homeswest. Any strategic policy issues identified by HOSC are recommended to AESC for discussion and development.

Shelter WA provides the chair and the Department of Housing and Works provides the secretariat for HOSC. The Minister has invited representation from the Department of Housing and Works, the office of the Minister for Housing and the community sector, as well as representatives of regional, Indigenous and CALD people.

### ***Access and Equity Standing Committee (AESC)***

The role of AESC is to identify and develop strategic policy designed to improve outcomes

for housing consumers. AESC works across tenure to investigate equity issues with regard to existing housing stock, including the non-financial dimensions of housing accessibility. Strategic policy developed by AESC is recommended to HAC for discussion and adoption.

Shelter WA provides the chair and secretariat for AESC and the Minister has invited representation from various Government agencies, housing related peak bodies and the office of the Minister for Housing, as well as representatives of regional, Indigenous and CALD people.

### ***Community, Affordable and Sustainable Housing Committee (CASHC)***

The role of CASHC is to identify strategies and barriers to expand the supply of affordable housing through home ownership and the rental market. While CASHC works across tenure, it has a particular role with regard to the development of community housing. Strategic policy developed by CASHC is recommended to HAC for discussion and adoption.

Shelter WA provides the chair for CASHC, while the secretariat is shared between the Community Housing Coalition of WA (for issues related to community housing) and the Office of Policy and Planning at the Department of Housing and Works (for all other issues). The Minister has invited representation from the Department of Housing and Works, AHURI (WA), community housing, disabilities and housing industry peak bodies, Keystart, and the WA Local Government Association, as well as representatives of regional and Indigenous people.