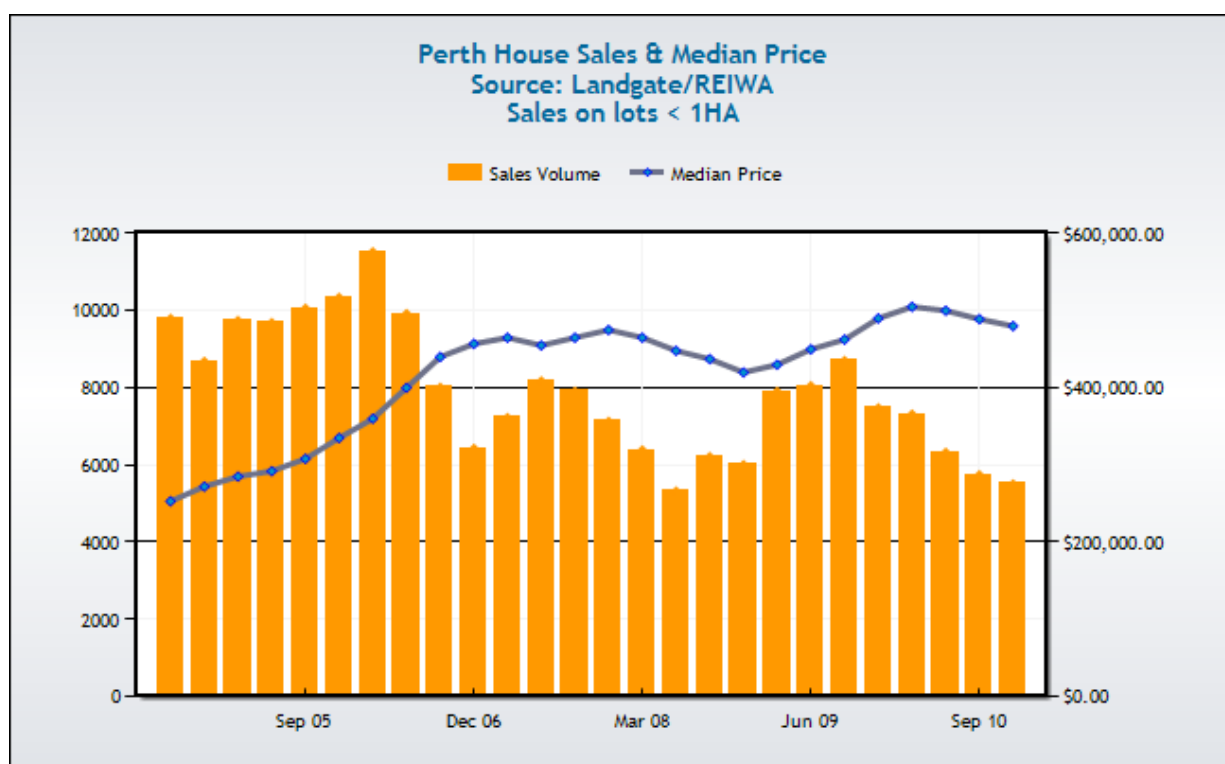


The State of Affordable Housing 2011 Shelter WA Report

In March 2011, Shelter WA released its latest version of the State of Affordable Housing in WA report. An excerpt of the report appears below. The full report is available [here](#).

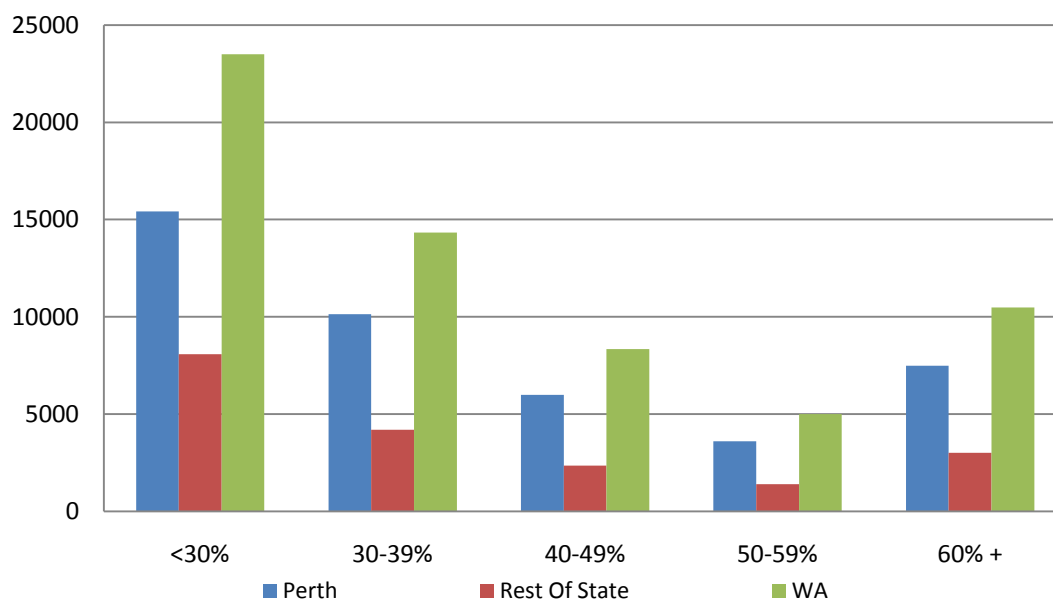
Housing prices have increased dramatically over the past decade in Western Australia. Even with slight declines in housing prices since March 2010, home ownership is still well out of reach for many low and moderate income households. As of September 2010 the median house price in Perth was \$480,000 and the median rent was \$370 per week.



With such high housing costs, many families find themselves unable to make ends meet and pay for other necessities. It can also adversely affect the well-being of the community as people residing in comparatively less costly housing in outer suburbs must often commute long distances to work, are less able to participate in community events due to time and money constraints, and may experience feelings of isolation and disconnection if they are displaced from proximity to extended family and social supports. The following graph shows the proportion of income spent on housing among low and moderate income renters (defined as those with incomes in the bottom two quintiles of the income distribution).

| | |
|---|---|
| 1. Shelter WA State of Affordable Housing WA Report | 2. Shelter WA Affordable Housing Survey Results |
| 3. National Shelter Media Release | 4. National Shelter Meeting Alice Springs March 2011 |
| 5. Shelter WA Submissions and Projects | 6. Shelter WA Free Public Forums <i>Renting in WA</i> |
| 7. Grants and Funding Opportunities | 8. Discussion Papers, Submissions and Issues Papers |
| 9. Research, Reports and Publications | 10. Conferences, Events and Workshops |
| 11. Media Releases | 12. Useful Links |

Proportion of income spent on housing among renters with incomes below 40% of the income distribution



While the housing affordability crisis is severe, there are many positive developments in WA aimed at increasing affordable housing. For example, in 2009 the Commonwealth government announced an unprecedented level of funding through its National Affordable Housing Agreement (NAHA) and the associated National Partnership Agreements on Homelessness and Social Housing. As part of the stimulus package in response to the global financial crisis, the NAHA and NPA's will provide \$6.2 billion worth of housing assistance to low and middle income Australians in the first five years. According to the FaHCSIA website, the NAHA aims to 'ensure that all Australians have access to affordable, safe and sustainable housing that contributes to social and economic participation'. Alongside the NAHA, the State received funding through the National Partnership for Remote Indigenous Housing in 2009. As of 30 June 2010, the Department of Housing had built 78 new houses and refurbished 150 houses in remote Indigenous communities. Also as part of the NAHA, the National Partnership Agreement on Homelessness will provide WA with \$135 million over four years aimed at early intervention, breaking the cycle of homelessness, and improving and expanding existing homelessness services.

Shelter WA welcomes this infusion of much-needed funding and applauds the government's efforts to address the housing crisis. Nevertheless, Shelter WA is concerned about the long term outlook of affordable housing in WA. In addition to short-term funding, policy changes are needed in planning and zoning to increase the stock of affordable housing and help stem inflationary housing prices. Existing policies which provide demand-side housing subsidies such as rental assistance, and first home-buyer grants are useful and provide support for some disadvantaged people in precarious housing positions. Yet, these policies do little to encourage more stable, sustainable growth of mainstream affordable housing, which is needed to address the depth and breadth of housing stress experienced by low and moderate income households in WA.

At the time of writing, the WA state government is considering a new State Affordable Housing Strategy. The state government is also in the process of developing detail underpinning a Not-For-Profit Community Housing Growth Strategy. Both strategy documents were planned to be developed following the work of the Social Housing Taskforce. These high level strategic documents, alongside the WA Planning Commission's *Directions 2031*, have the potential to significantly influence housing affordability and the provision of social housing in WA in the future.

Shelter WA's 2011 report on the State of Affordable Housing describes the extent of the housing crisis in WA and the impact that the crisis is having on our society. It also explains what is being done to address the housing crisis, and what remains to be done. The full report is available on the Shelter WA website. To download the report, click [here](#).

Shelter WA Affordable Housing Survey Results

Preliminary results from Shelter WA's Affordable Housing Survey are now available. Over 25% of respondents were homeless, live in temporary accommodation, were staying with friends or family, or were in need of accommodation. Forty percent rent from a private landlord or real estate agent, 13% live in public housing, 3% in community housing, and 18% were home owners.

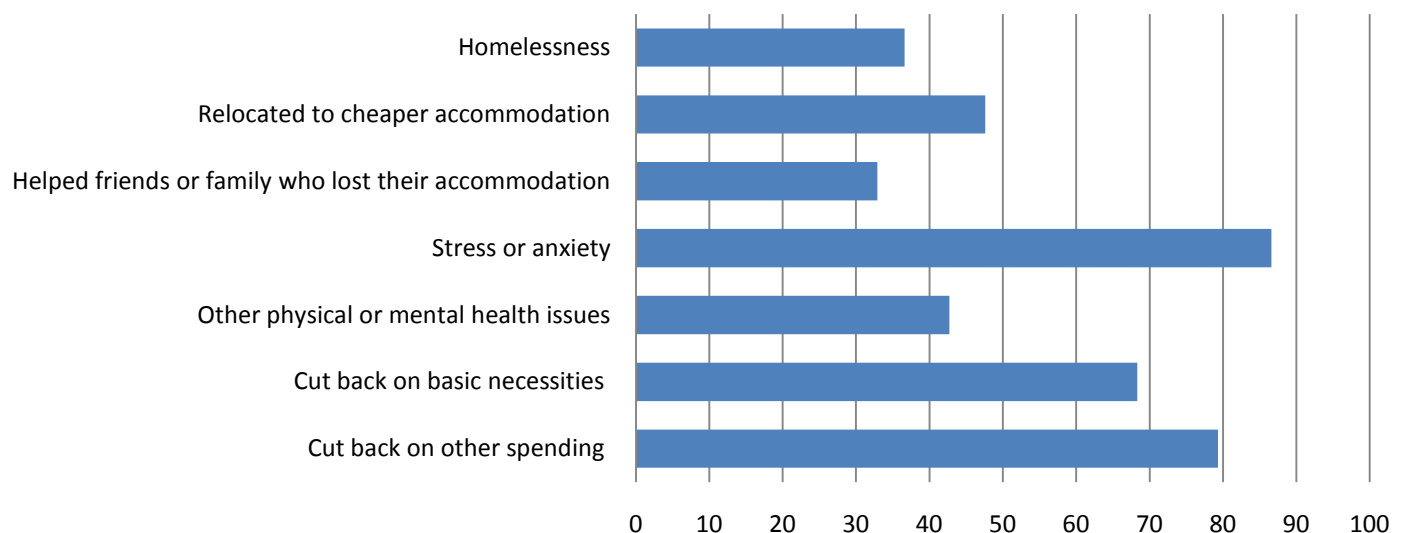
"Currently, I am living in a dangerous situation without options or choices...I am scared."

When asked what they were most concerned about, 77% identified the high cost of housing in WA, 71% cited a shortage of rental properties, and 69% said they were concerned about long waiting lists for public housing and community housing. Other comments included lack of diversity in housing types (30%), shortage of affordable homes for purchase (52%), discrimination in accessing housing (37%) and inadequate rental assistance for households on Centrelink benefits (45%). One person asked, "Why isn't there more small, accessible, cheaper places for single people to buy?"

"I will worry about my housing for the rest of my life - I rent and therefore have no security."

Many respondents cited adverse effects to their health and well-being as a result of high housing costs. Eighty-seven percent said that they had experienced stress or anxiety and 43% cited other physical or mental health issues. Thirty-seven percent experienced homelessness and 48% had to relocate to cheaper accommodation or share housing. Sixty-eight percent of respondents have had to cut back on basic necessities including food, clothing, education or healthcare.

Have you experienced any of the following as a result of housing costs or concerns about accommodation?



The survey also aimed to gauge people's support for government policies and programs to support affordable housing.

Seventy-four percent of respondents support building more public housing, 64% support requiring new developments to include at least 15% affordable dwellings, 67% support restricting rent increases, and 62% want more tenancy support to help people stay in their homes. Other people suggested more rent to own schemes and using money from a mining tax to assist people less fortunate to have a place to live.

"I go without food and also my daughter is hungry most of the time... I make sure I give her what I can but I feel bad."

The respondents' comments (shown in the circles) convey the depth of their concerns about their accommodation and health and safety.

If you would like to take part in the survey, go to [Affordable Housing Survey](http://www.shelterwa.org.au)

"I am getting older and with my current medical conditions, I simply worry about the future."

National Shelter Media Release 16 March 2011: *Arbib's housing overhaul welcomed*

National Shelter welcomes the Federal Government's direction to overhaul the nation's public housing system.

The overhaul, announced today by Senator Mark Arbib, argues that the current system is financially unsustainable.

In his address, Senator Arbib calls for a radically altered way of funding and managing public housing.

National Shelter's Chairperson, Adrian Pisarski, says the overhaul is a great opportunity, and should be the focus of the next National Affordable Housing Agreement (NAHA).

"There is definitely a need for a fresh approach towards funding affordable housing in Australia."

"I encourage the Commonwealth and States to use the upcoming negotiations for a new NAHA to explore new directions.

Mr Pisarski says the National Tax Forum is another opportunity to consider how Australian housing can be improved.

"The focus should be on a sustainable, affordable housing agreement with growth at its core to meet anticipated demand."

National Shelter recommends the National Shelter policy platform and the work of the Affordable Housing Summit Group as the basis for a new agreement.

For more information:

Adrian Pisarski, Executive Officer PH: 0417 975 270 or Joanna Carson, Communications Officer PH: 0418 718 584

National Shelter's policy platform, *Housing Australia Affordably* is available at www.shelter.org.au

National Shelter Council meeting in Alice Springs 10-11 March

Shelter WA participated in the National Shelter meeting in Alice Springs in March 2011. Shelter WA thanks Toni Vine Bromley, and David Havercroft from NT Shelter and Territory Housing for facilitating visits to the new and refurbished social housing in Alice Springs Town Camps and our impression is hopeful and positive for Alice Springs and the Aboriginal peoples there.

A variety of future projects were discussed including an Indigenous Housing Roundtable meeting at the end of April and state forums to contribute to this issue. Further information will be available as these projects progress.

Shelter WA Submissions and Projects

Shelter WA is currently involved in the following submissions. If you have any issues or concerns that you would like us to consider when preparing our submissions contact Shae at research@shelterwa.org.au or phone 9325 6660.

National Quality Framework for Homelessness (FaHCSIA)

The Commonwealth, States and Territories are working together to progress the development of a National Quality Framework to achieve better outcomes for people who are homeless or at risk of homelessness by improving the quality and integration of services they receive. Stage one consultations focused on what quality service provision is, the mechanisms to support that quality and how to involve mainstream and allied services in a Homelessness National Quality Framework. These consultations were undertaken in February, March and April of 2010 and guided the development of an [Options Paper](#) that identifies four possible models of a Homelessness National Quality Framework.

Stage 2 consultations on a National Quality Framework for homelessness commence on the 17 of February across Australia. Public workshops will be held in Bunbury on 24 March and Perth on the 25 March. Please register if you want to attend the consultations by either emailing homelessness.quality@fahcsia.gov.au or calling 1800 300 125.

Further information on NQF and the NQF Options Paper are available on the FaHCSIA website (www.fahcsia.gov.au).

Written submissions will be accepted and an on-line survey will also be available once consultations begin.

Shelter WA will be attending the workshop in March and preparing a submission.

Protecting the rights of boarders and lodgers

The Boarders and Lodgers Working Group, convened by the Tenants Advice Service and Shelter WA, met on 15 March. One of the outcomes of that meeting was to create a questionnaire, and compile the responses into a report to be distributed among relevant stakeholders. The purpose of the questionnaire is to get an accurate view of the issues and perspectives of organisations working with boarders and lodgers. Responses to the questionnaire will be compiled for the next meeting of the Boarders and Lodgers Working Group, and will be used to inform the future direction of the Group. Responses must be received by 28 April 2011.

[Click here](#) to complete the survey on line or contact Shae Garwood at research@shelterwa.org.au to receive a copy of the questionnaire via e-mail.

Shelter WA In the News: [Concerns evictions could increase homelessness](#)

Renting in WA?

What are the issues? What is your experience?

We want to hear from you.

Are you on a low or moderate income?

Are you doing without other things so that you can pay your rent?

Is it hard to find an affordable rental property?

Can't afford another rent increase?

Shelter WA

Free

Public Forum

This is an opportunity to have your say!

North Metro Forum

Tuesday, 10 May 2011, 6.30 – 8.30pm

Herb Graham Recreation Centre, Function Room, 27 Chesterfield Rd, Mirrabooka

South Metro Forum

Wednesday, 25 May 2011, 6.30 -8.30pm

Queens Park Recreation Centre, Meeting Room, Centre St, Queens Park

RSVP or just attend on the night

For more information contact Shelter WA: phone 9325 6660 or email cdpo@shelterwa.org.au



For more information contact Shelter WA: phone 9325 6660 or email cdpo@shelterwa.org.au

Grants and Funding Opportunities

Social Innovation Program Grants

Community groups are invited to apply for the first round of the State Government's new Social Innovation Grants Program. The Government has allocated \$2million funding for 2010-11, increasing to \$4million in future years.

Applications close 31 March 2011.

More information, including the application guidelines and criteria for priority selection, will be available on the Department for Communities' website on 21 January 2011 - www.communities.wa.gov.au or phone 6217 8400

NRMA Insurance Community Grant

The NRMA Insurance Community Grants supports local community organisations that are making a difference in their community by working in the areas of crime prevention, road safety, emergency readiness and response, and the environment through our Community Grants Program.

Since 2003 the Community Grants Program has given more than \$4 million to over 1,000 community projects right across Australia.

[Apply now](#) for an NRMA Insurance Community Grant. **Applications close 31 March 2011.**

Check out NRMA's [Information Booklet](#) for Tips & Hints and Terms & Conditions.

Need more information? Read NRMA's [FAQs](#) or call them on 1300 306 496.

Call to apply for Environmental Community Grants 2011

Environment Minister Bill Marmion has called for applications for the third funding round of the State Government's four-year \$6million Environmental Community Grants Program.

"There are eight categories of grants, including biodiversity conservation; sustainable catchment management; interpretation and sustainable recreation in natural areas, regional parks and Bush Forever sites."

The State Government will also support the many dedicated wildlife rehabilitators who provide a vital service to the community, with grants of \$500 available for individuals and up to \$5,000 for incorporated groups.

"Funding will be available for projects which rehabilitate, conserve, enhance or restore natural areas or values, as well as for activities that raise public awareness for nature conservation at a local level," the Minister said.

Application forms can be downloaded from <http://www.dec.wa.gov.au>, or obtained by phoning 9442 0300, and **must be submitted by April 7, 2011.**

[Link to Minister's Media Statement](#)

Westpac Community Treasurers' Awards

There are hundreds of thousands of community groups in Australia who rely on the unsung and unpaid labour of honorary treasurers. Responsible for the financial wellbeing of their organisation, they often go above and beyond the call of duty to make sure ends meet.

Recognising this, the Westpac Community Treasurers' Awards have been established to show appreciation of the immense contribution community treasurers make to their community groups, the community sector, and to Australia.

This national competition, an initiative of Our Community and Westpac, is designed to unearth three unsung community treasurers who fulfil the duties of ensuring good financial management, good financial governance and good financial outcomes.

Awards will be given for treasurers in three budget classes:

Small Organisation: For organisations with an annual income of less than \$100,000 per annum.

Medium Organisation: For organisations with an annual income between \$100,000 and \$1 million per annum.

Large Organisation: For organisations with an annual income of more than \$1 million per annum.

All entries submitted online or by post must be received by Our Community by 5pm on **Friday, 29 April 2011**. Winners will be notified by telephone.

The winner in each class will win \$5000 for their organisation, a further \$5000 worth of tools and training, and an impressive trophy to recognise their achievements.

For more information visit the [Our Community](#) website. Click here to read the [media release](#)

2011 Youth Grants WA - Strategic Project Grants now open

Youth Minister Robyn McSweeney has invited incorporated not-for-profit organisations and local governments to apply for grants of up to \$25,000 that have opened for 2011.

The annual Youth Grants WA - Strategic Project Grants program provides funding to support activities and services that benefit young people aged 12 to 25 years throughout Western Australia. An annual investment of \$175,000 for the grants is made each year by the State Government.

Applications for the grants must address at least one of the following priorities:

- improving mental and emotional wellbeing
- increasing drug and alcohol awareness
- changing community perceptions of young people
- enhancing the capacity of youth sector agencies.

Application kits can be obtained by calling the Department for Communities on 6217 8400 or online from <http://www.communities.wa.gov.au/grants>. **The closing date for applications is Saturday, 30 April 2011 at 5pm.**

National Youth Week 2011 - National Talent Competition

The 2011 National Talent Competition is now open, with some awesome prizes on offer for those of you who can RockIT, WritelIT, SnapIT, ShootIT or DesignIT.

By entering the National Talent Competition, you'll put yourself in the running to win prizes like a \$3000 voucher or a 32GB Apple iPad, and have your work judged by industry hot shots in your chosen field.

The National Talent Competition closes at 11.59pm AEST on **Sunday 17 April 2011.**

Visit <https://www.youthweek.com/comps/Talent/Pages/default.aspx> for more information.

\$2,000 Early Years Activities Grants available to local communities

Community Services Minister Robyn McSweeney has encouraged communities eager to improve the wellbeing of young children, to apply for an Early Years Activities Grant worth up to \$2,000.

The annual State Government funding investment of \$300,000 is available to community groups and organisations across the State for activities targeting children aged 0-8 years, their families and carers.

"The aim of these grants is to identify early year priorities in local communities to ensure there are plenty of opportunities for the growth of young children, particularly in isolated communities where these options may not be so readily available."

The Minister said activities to be promoted through the grants should seek to improve the wellbeing of young children in a community; support families in nurturing and caring for their children; and engage communities in the co-ordination of resources supporting early childhood.

Community groups and organisations interested in applying should contact their local Department for Communities children's services officers located across the State. Contact details can be accessed [here](#) or contact the Minister's office on 9222 8950. Link to Minister's [media statement](#)

Healthier WA Awards - \$10 000 Prize

The Australian Medical Association (WA) and Healthway are promoting the 2011 Healthier WA Award. The award recognises WA organisations that have, through a specific venture, project or program, made an exceptional contribution to the advancement of health and wellbeing outcomes across the WA community. A \$10,000 grant will be awarded to the 2011 Healthier WA Award winner. More information can be found on the Healthier WA Award section of the AMA (WA) website: www.amawa.com.au/HealthierWA. **Entries close 4.30pm, Friday, 8 April 2011.**

WA Grants for Women 2011

The Department for Communities is currently seeking applications for the WA Grants for Women Program.

In support of the Centenary of International Women's Day in 2011, the Department for Communities is providing one-off grants of up to \$5,000 to eligible community groups and organisations for projects that strengthen the social and economic wellbeing of women, increase their participation in the community, promote positive images of women, encourage women's leadership and/or encourage women's sense of safety.

The program guidelines and application form are available on the department's website at www.communities.wa.gov.au.

If you have any further questions or queries, please contact the Department for Communities on 6217 8400 or email @communities.wa.gov.au. **Applications close at 5:00pm on Friday 15 April 2011.**



Community Grants Program

The Office of Multicultural Interests (OMI) vision is an inclusive and cohesive society drawing on the cultural and linguistic diversity of its people to enhance the social, economic and development of the State. The Community Grants Program (CGP) objectives support the OMI strategic plan by encouraging participation, equity and promotion of all Western Australians in projects and events that remove barriers and enhance cross-cultural engagement.

Applications can be submitted at anytime however, applications received after the closing date for each round will only be considered by the grants assessment panel in the next funding round:

Closing round dates

4pm Thursday 19 May 2011

4pm Thursday 18 August 2011

4pm Thursday 10 November 2011

Applications may be posted to the Office of Multicultural Interests, 2nd Floor, Dumas House, 2 Havelock Street, West Perth, or hand-delivered to Dumas House, Ground Floor Reception.

The onus is on community organisations to ensure that applications are received by OMI no later than 4:00pm on the closing date. Applications received or postmarked after the closing date for each funding round will not be considered in that round. Please note: Emailed or facsimile applications are not accepted.

If you need help with your application, please contact the Grants Officer at OMI on 9217 1619 or by email on nilda.eisen@omi.wa.gov.au. Application Forms and Guidelines on how to prepare your application are available at [here](#).

Applications for the Safety and Security Project 2011 is Now Open

This project aims to reduce crime and improve safety and security for women and children in Western Australia who are experiencing DFV and choose to remain in the home with additional security measures and DV Outreach Support.

Funding of up to \$440.00 (inclusive of GST) is available from funding of \$5,000.00 provided by the Office of Crime Prevention to provide security options.

The Women's Council has successfully received Community Partnership Fund of \$5,500.00 (inc GST) from the Office of Crime Prevention to operate the SAS Project 2011.

The SAS Project assists women and children to remain safety in their own home after separation from their violent partner/father by providing financial support to have install, replace and purchase a variety of security options.

For further information or to apply contact the Women's Council for Domestic and Family Violence Services (WA) on phone: 08 9420 7264 or email: minako@womenscouncil.com.au. Or visit their website. www.womenscouncil.com.au

Discussion Papers, Submissions and Issues Papers

National Quality Framework on Homelessness Survey

As described above, consultation workshops seeking feedback on a National Quality Framework on Homelessness are currently underway across Australia. For service providers who are unable to attend these workshops there is also an online survey available on the FaHCSIA website. The direct link to the survey is: <http://www.surveymonkey.com/s/LCF27DC>

For further information on how to participate in the consultations, visit the FaHCSIA website www.fahcsia.gov.au/.

If you need any further information call 1800 300 125 or email homelessness.quality@fahcsia.gov.au

Call for Contributions – Parity April 2011 edition

The Australasian Housing Institute (AHI) and Council to Homeless Persons (CHP) are producing a joint edition of their regular publications, HousingWORKS and Parity, examining the connections between housing stress and homelessness. This edition is sponsored by Mission Australia. All contributions welcome. Deadline for submissions: Friday 22 April. Download the PDF Call for contributions flyer [here](#)



The Blue Room Theatre & Professional Collective Theatre Company SA present

Appalling Behaviour

There is something disturbingly honest about living on the streets and wondering why...

Written and performed by Stephen House
Directed by Justin McGuiness
Music and sound by Peter Neilson

"A compelling in your face drama... Brutally honest, devastatingly real" – Sunday Mail

AWGIE winning playwright and actor Stephen House, twice awarded by the Australian Writers Guild and shortlisted for The Patrick White and Queensland Premier's Drama awards, takes you on an unforgettable journey into the darkest corners of the seedy urban Parisian underworld.

Written on the streets of Paris, from the banks of the Seine to the tucked-away all-night sleazy clubs, this acclaimed poetic solo performance about a man living on the very edge will keep you thinking long after you leave the theatre.

Following the show's 2010 debut in Adelaide to rave reviews, *Appalling Behaviour* comes to Perth ahead of 2011 seasons in Melbourne, Queensland and India.

22 March to 9 April 2011

"Weird and wonderful, Appalling Behaviour knocks your socks off" – Advertiser

"A work of intense beauty and insight" – DB Magazine

"House cleverly and brilliantly poses disturbing honest questions" – Australian Stage Online

"An extraordinary piece of art" – Independent Weekly

Tickets: Full \$25 / Conc. \$20, Blue Room Theatre Members: Full \$20 / Conc. \$15, Preview & Groups 8+ \$15

Bookings / Info: www.blueroom.org.au or phone (08) 9227 7005

Research, Resources, Reports and Publications

Australian Bureau of Statistics (ABS)

www.abs.gov.au

[Australian Social Trends, Mar 2011](#)

[Building Approvals, Australia \(Media Release\), Jan 2011](#)

[Housing Finance, Australia, Jan 2011](#)

[Lending Finance, Australia, Jan 2011](#)

[Census of Population and Housing: Outcomes from the 2011 Census Output Geography Discussion Paper, 2011](#)

[Demography News, Feb 2011](#)

[ABS launches most comprehensive health survey ever conducted \(Media Release\),](#)

[Information Paper: Survey of Income and Housing, User Guide, Australia, 2007-08 \(Replacement Content\)](#)

[Australian Economic Indicators, Mar 2011](#)

[Reflecting a Nation: Stories from the 2011 Census, February 2011 \(First Issue\)](#)

[Dwelling Unit Commencements, Australia, Preliminary, Dec 2010](#)

[Business Indicators, Australia, Dec 2010](#)

[Production of Selected Construction Materials, Jan 2011](#)

[Construction Work Done, Australia, Preliminary, Dec 2010](#)

[2011 Census Media Release: Census Area Supervisors - 3,500 job opportunities](#)

Australian Institute of Health and Welfare (AIHW) Reports

www.aihw.gov.au

[Public health expenditure in Australia, 2008-09](#)

[Comparing an SLK-based and a name-based data linkage strategy: an investigation into the PIAC linkage](#)

[Final Report: No. 165: The drivers of housing supply and demand in Australia's rural and regional centres](#)

[Final Report: No. 164: Housing, loneliness and health](#)

[Final Report: No. 163: Partnership working in the design and delivery of housing policy and programs](#)

[Final Report: No. 161: Stakeholder views of the regulation of affordable housing providers in Australia](#)

[Final Report, No. 160: Gentrification and displacement: the household impacts of neighbourhood change](#)

[Positioning Paper: No. 137: Pathways and choice in a diversifying social housing system](#)

Downloads from AHURI Events

Children, young people and housing

This seminar — co-hosted by AHURI and the Department of Families, Housing, Community Services and Indigenous Affairs (FaHCSIA)— discussed the findings from two AHURI research projects – *Improving housing outcomes for young people leaving state out of home care* and *Housing and developmental outcomes for children: a scoping study*. [Downloads available here...](#)

Improving housing affordability: the tax reform debate

Hosted by AHURI, this seminar brought together national commentators and analysts to explore, discuss and debate different facets of housing and tax, with particular emphasis on the Henry Tax Review's recommendations for addressing housing supply issues – and the impact of the recommended reforms on housing affordability stress. [Downloads available here...](#)

Housing, loneliness and health in contemporary Australia: what is the connection?

Housing, loneliness and health is the title of a recently published AHURI Essay by sociologists Professor Adrian Franklin and A/Professor Bruce Tranter from the AHURI Southern Research Centre. The Essay asks whether housing, loneliness and health are connected in contemporary Australia and if they are, is it a nexus that can be addressed positively through housing policy. This public seminar, which was hosted by AHURI at the State Library of Victoria, was organised to discuss and debate ideas raised in the Essay. [Downloads available here...](#)

Future housing for older Australians: overcoming barriers to innovation

Hosted by AHURI and The Benevolent Society, more than 200 policy-makers, researchers, planners, housing providers from the government, non-profit and private sectors across Australia attended this symposium, and discussed and debated an important question: how will we meet the housing needs of our rapidly ageing population? [Downloads available here...](#)

Australian Policy Online (APO)

www.apo.org.au

[Evaluation of the whole of mental health, Housing and Accommodation Support Initiative \(HASI\)](#) This evaluation aims to understand how well the HASI program is working by investigating the effectiveness of support for consumers, the benefits and limitations of the service model(s), and the costs and benefits of the program.

[At risk youth: a transitory state?](#) This briefing paper draws on existing research on 'at risk' youth and some primary data analysis to consider whether being at risk is a permanent or transitory state.

[Managing risk in community services](#) How do service providers and professionals adopt and adapt risk management in the context of their service goals and ideals, and what impact does this have on clients, patients and carers?

[Perceptions of economic hardship and implications for illness management](#) This study explores the options available to general practitioners to help patients experiencing economic hardship to manage their illnesses and the implications of these findings for policy.

[Perceived barriers and facilitators to mental health help-seeking in young people: a systematic review](#) Adolescents and young adults frequently experience mental disorders, yet tend not to seek help. This systematic review aims to summarise reported barriers and facilitators of help-seeking in young people.

[Native title report 2010](#) The annual Native Title Report for 2010, reports on the impact of the Native Title Act 1993 (Cth) on the exercise and enjoyment of the human rights of Aboriginal and Torres Strait Islander peoples.

[Australian Institute of Family Studies strategic plan 2009–12](#) This Strategic Plan provides the overarching framework for the Institute's strategic direction and research planning. It is a companion document to the Institute's Research Plan 2009–12.

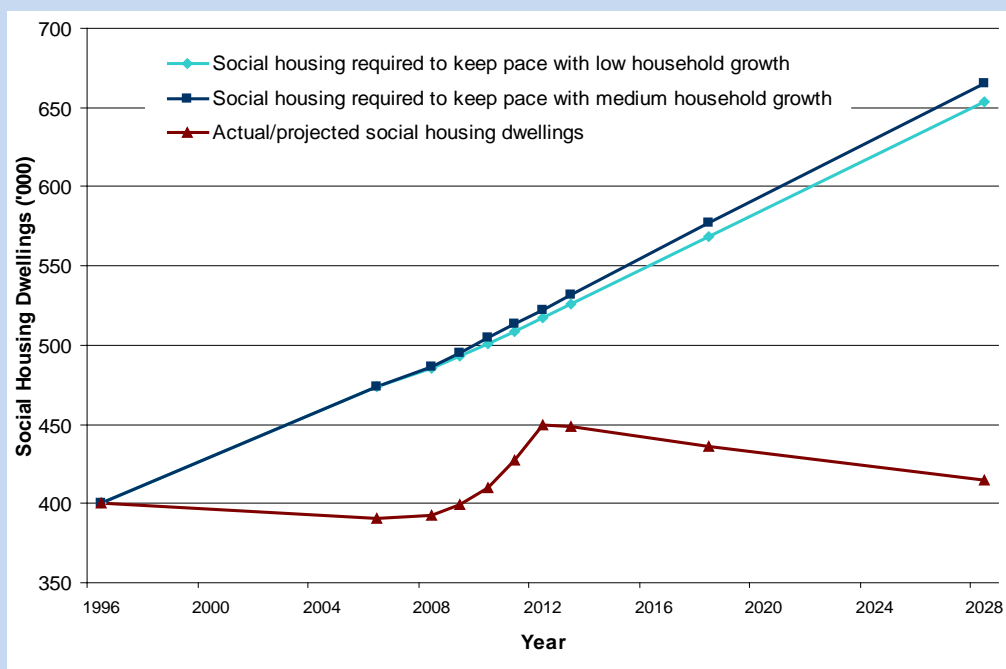
A copy of the National Shelter report prepared in December 2010 titled *Issues from the Henry report on Australia's future tax system for housing policy* is now available to download [here](#)

National Shelter updated *Housing Australia* Fact Sheet

The National Shelter *Housing Australia* factsheet has been updated and a copy is available at the National Shelter website www.shelter.org.au

Did you know?

The current level of social housing is inadequate to meet demand. The graph below from the Housing Ministers Conference, shows the gap between projected need and availability of social housing in Australia.



Source: Housing Ministers Conference (2010), *Implementing the national housing reforms: a progress report to the Council of Australian Governments from commonwealth, state and territory housing ministers*, Prepared by the Victorian Department of Human Services.

Upbringing rather than neighbourhood determines delinquency

New research into whether it is "neighbourhood" or upbringing that more determines juvenile antisocial behaviour has been released by the Australian Institute of Criminology (AIC).

The groundbreaking research used data from the Mater University Study of Pregnancy which has followed a group of children since their birth. This was meshed with data on South East Queensland statistical local areas as defined by the Australian Bureau of Statistics.

"Geographic disadvantage was found to have a limited influence on behaviour. The research team found the major factors affecting adolescent antisocial behaviour were family dynamics, poor school performance, and early childhood aggression," principal author Dr Tara Renae McGee said.

"The study found that the variation in antisocial behaviour attributable to the statistical local area, that is, the neighbourhood, was less than one per cent.

"However, several early childhood variables significantly predicted antisocial behaviour, such as a higher number of maternal births and higher maternal alcohol consumption, shorter relationships between the mother and her partner, maternal smoking and the number of times the child had lived with someone else," Dr McGee said.

Poor school performance - as rated by the child at age 14 - was strongly associated with higher rates of antisocial behaviour. Young people living in families that communicated reported lower antisocial behaviour. This is related to parental supervision—when children disclose activities to their parents, the parents can more effectively monitor behaviour.

The study was funded by the Criminology Research Council.

AIC media contact: Colin Campbell 02 6260 9244 / 0418 787 181

[For a full copy of the report click here.](#) [Link to Media Release, 25 February 2011](#)

Conferences, Events and Workshops 2011

7th National Housing Conference postponed

The National Housing Conference is a significant event in the housing research, policy and practice calendar, and the Queensland Government was scheduled to host the 7th Conference in September 2011 in partnership with AHURI. However, the recent cyclones and flooding in Queensland have impacted heavily on the demands of Government, non-government services, and the housing and construction industries.

To allow time for recovery and rebuilding to proceed, the Queensland Government and AHURI have agreed to postpone the 7th Conference until **30 Oct-2 Nov 2012**. Further information regarding the 7th Conference will become available at <http://www.nhc.edu.au/brisbane2012/> as it is released.

National Men's Health Gathering September 2011

Abstract submissions close on 1 May 2011. Earlybird registrations close on 17 June 2011

When: 19 - 22 September, 2011

Where: Pan Pacific Hotel, Perth, 207 Adelaide Terrace, Perth, WA 6000

For details: www.workingwithmen.org.au

The Gathering will incorporate:

- 9th National Men's Health Conference.
- 6th National Aboriginal & Torres Strait Islander Male Health Convention
- 5th National Men and Family Relationships Forum

The 2011 National Men's Health Gathering provides a chance for delegates to participate in strengthening the advancement of male health in the Australasian region and beyond through effective strategic planning and knowledge management.

You are invited to participate as a Sponsor in the National Men's Health Gathering 2011. The Gathering will provide your organisation with excellent opportunities to promote your products and services and take advantage of an event that will have strong community interest and media coverage.

WACOSS Emerging Issues Seminar 1 April 2011

WACOSS is holding its third annual Emerging Issues Seminar on Friday 1st April 2011. Following on from the highly successful 2010 event the seminar will provide a comprehensive overview of the most important emerging trends and issues that will affect the community services sector in 2011. The seminar covers five key topic areas: social, political, economic, environment and service delivery. Delivered by WACOSS senior staff and guest speakers, the seminar provides detailed up-to-date information which assists all organisations in planning for and responding to these critical issues.

Comments from 2009: Thank you for this very informative and crucial sharing of information. Power is knowledge and it is vital that we must be on the front foot in order to recognise and be ready to benefit from opportunities that will come out of the reform; Generated a lot of thought which I will use in my strategic planning. Well done for the foresight; Well done! Excellent content and presentation.

Publication date: 18 Jan 2011. For more information: <http://www.wacosstraining.org.au/index.cfm/booking.328>

WANADA - The Future of the Alcohol and other Drug Sector – A National Perspective

The Future of the Alcohol and other Drug Sector: A National Perspective Special guest: David Templeman, CEO, Alcohol and other Drugs Council of Australia (ADCA) Monday 28 March 2011 2pm – 4pm Outcare, 27 Moore St, East Perth

To RSVP, please contact Deanne Ferris on 6365 6365 or via deanne.ferris@wanada.org.au

WAAMH: Mental Health Symposium

Mental Health Symposium Speakers: Mental Health Commissioner Eddie Bartnik, WAAMH President John Gherardi, SMAHS Mental Health Executive Director Dr Elizabeth Moore.

Tuesday 5 April 2011, 9am – 4pm (registration from 8.30am) Gloucester Park (just behind the WACA, Nelson Crescent. Good parking available) Lunch included.

Come share your experiences, achievements and knowledge of contemporary services and supports for people with mental illness and their families.

RSVP by Monday 28 March to reception@waamh.org.au or ring 9420 7277.

Hosted by the Western Australian Association for Mental Health. Supported and funded by the Mental Health Commission.

The Economic Audit Committee's final report – Putting the Public First: Partnering with the Community and Business to Deliver Outcomes – was released in October 2009. The report contains 43 recommendations directed toward achieving the vision of a more collaborative and innovative public sector. More specifically the Committee envisaged that in five to ten years:

- the government will be supported by frank and well-informed advice;
- collaboration will be a standard approach;
- community and public sector organisations will be genuine partners in the delivery of human services;
- people will have greater opportunities to exercise choice and control over how services are designed and delivered; and
- above all, outcomes achieved for all Western Australians will be among the best in the nation and will continually improve.

The state government supports the broad direction of the final report of the Economic Audit Committee and will be progressively considering recommendations.

More information, including newsletters, speeches and communiqué, is available at the Department of the Premier and Cabinet's website at: <http://www.dpc.wa.gov.au/Publications/EconomicAuditReport/Pages/Default.aspx>

More information about the state government's Procurement Reform is available from:

<http://www.dpc.wa.gov.au/Publications/EconomicAuditReport/Pages/ProcurementReforms.aspx>

Is your workplace/ business/ agency MENTALLY HEALTHY and AWARE?

Would you like to become better equipped to deal with and support clients with mental illness?

Would you like to be better prepared to deal with and support staff with mental illness?

Would you like to create a more mentally healthy and aware workplace for staff and clients?

We can help!

The Lotus Education program- a service of the Mental Illness Fellowship of WA offers a range of courses and presentations to help everyone become more mentally aware. Some of the courses on offer are:

- 2 or 4 day crisis intervention course – This course is designed for those who are likely to come into contact with people with mental illness in crisis.
 - 1 day mental health and illness awareness training –suitable for everyone
- Top ten series of one hour presentations including:
 - The top 10 Issues for MH consumer and their families
 - The top 10 Mental Health and Illness Resources
 - The top 10 Misconceptions about Mental Health and Illness
 - The top 10 ways to make you workplace mentally healthy
 - The top 10 ways to stay mentally healthy

PLUS The Lotus program staff can also tailor training programs and presentation to meet the specific needs of your workplace.

For more information or to receive a quote for services, please contact program coordinator Juanita Fishwick at juanita.lotus@gmail.com or visit www.mifwa.org.au

1 in 5 people in Australia have a mental health issue at some stage in their life. That means mental illness is an issue that affects 20% of your staff AND clients.

WA Family Pathways Network 2011 Annual Conference

WA Family Pathways Network 2011 Annual Conference 11 and 12 May 2011 Perth

The conference will focus on mental health issues and families, especially those in the family law system context. This year in addition to including a number of expert key speakers, interactive workshops will be held during the conference on 11 May, followed by a second day of interactive workshops on 12 May 2011. The aim is to inform practice and to equip practitioners to more effectively deal with these issues in their work.

For more information regarding this process, please contact Dr Michelle Rowe, Network Development Officer, WA Family Pathways on (08) 9489 6345 or via michelle.rowe@wa.relationships.com.au

ACOSS National [Conference](#) (Melbourne) 29-30 March

[Youth Homelessness Matters Day](#), *Hide & Seek: the Hidden Nature of Youth Homelessness*, 6 April

WACOSS *Emerging Issues* [Seminar](#) (Perth) 1 April

National [Youth Week](#) 1-10 April

Australian Health Promotion Association [Conference](#) (Cairns) 10-13 April

The Aboriginal Health Council of WA: Annual State Sector [Workshop](#) (Perth) 12 - 13 April

Community Housing Federation Australia, [National Affordable Housing Exchange](#) (Sydney) 14-15 April

National Disability and Carer [Congress](#) (Melbourne) 2-3 May

National Council of Women WA (NCWWA) Centenary [Exhibition](#) Free (Perth Town Hall) 2-8 May

WACOSS IntERactions Emergency Relief [Conference](#) (Perth) 17-18 May

National Indigenous Domestic Violence [Conference 2011](#) (Gold Coast) 17-19 May

Reconciliation Week 27 May – 3 June. For more info visit [Reconciliation Australia](#).

Australasian Therapeutic Communities Association (ATCA) Annual [International Conference: Therapeutic Communities Today - No Closed Doors](#) (Fremantle) 30 May - 3 June.

Connecting Up [Conference Reboot Your Nonprofit](#) (Melbourne) 1-3 June

St Vinnie's [CEO Sleepout](#) (National) 16 June

Drug and Alcohol Nurses of Australia (DANA) [Conference](#) (Melbourne) 15-17 June

6th Annual Housing [Congress](#), (Brisbane) 28-29 June

NAIDOC [Week](#) (National) 3-10 July

Australian Social Policy [Conference Social Policy in a Complex World](#) (Sydney) 6-8 July

Primary Health Care Research [Conference](#) (Brisbane) 13-15 July

The Household, Income and Labour Dynamics in Australia (HILDA) Survey 10th Anniversary Research [Conference](#) (Melbourne) 14-15 July

WA Family Therapy Association [Symposium: Family Therapy in the Tapestry of Clinical Practice](#) (Bentley, Perth) 29 July

National Homeless Persons' [Week](#), *My Address: diversity in homelessness* 1-7 August

WA Rural and Remote Mental Health [Conference](#) (Newman, WA) 9-11 August. Closing date for abstract submissions is 15 April.

[Garma Festival](#) (Gulkula, NT) 5-8 August. Info is also available at www.yyf.com.au. Deadline for bookings 22 July.

National Men's Health [Gathering](#) (Perth), 19 - 22 September

AHURI 7th National Housing [Conference](#) (Brisbane) 20-23 September

Public Health Association Australia (PHAA) 41st Annual [Conference](#) (Brisbane) 26-28 September

Commonwealth Heads of Government Meeting [CHOGM](#) (Perth) 28-30 October

[World Homeless Day](#) (International) 10 October

The Australasian Professional Society on Alcohol and other Drugs (APSAD) [Conference](#) (Hobart) 13–16 November. Abstract submissions close 15 May.

Social Inclusion Week (National) 19-27 November [Website](#)

Media Statements/Releases

WA State Government

[New era for the Gascoyne as new Regional Planning Committee is launched](#)

[\\$1.5million grant for treatment of alcohol and other drug dependency](#)

[Consumer protection champions awarded](#)

[State Government specialist taskforce established to rebuild Warmun](#)

[Warmun flood declared a disaster, all residents safe.](#)

[Minister launches Young Carers WA website](#)

[Development partner sought for Eglinton residential project](#)

[Revitalisation and regeneration continues at the heart of Mirrabooka](#)

[Cockburn Coast leaves its industrial past behind for an urban future](#)

[Heftier penalties to protect WA's heritage from illegal demolition and development](#)

[New facility provides a boost in trade training](#)

[Planning framework to guide Pilbara's continuing transformation](#)

[Biggest-ever developer contribution scheme to boost Armadale land supply](#)

[Ord East Kimberley worker's village assists Warmun evacuation](#)

[Plans announced for regional residential college upgrades](#)

[Three developers short listed to transform Karratha](#)

[Public comment sought on draft rural planning policies](#)

[Growing economy remains strong in quarterly financial results](#)

[State welcomes report into long-term disability care](#)

[Peet Limited has been awarded the tender to project manage the Department of Housing's Golden Bay development](#)

[Government-owned Hale House to be refurbished to heritage standards](#)

[Government office accommodation consolidation to save \\$165million over 15 years](#)

[Prohibited Behaviour Order now in effect](#)

[Significant State Government investment into WA seniors outlined at key policy briefing](#)

[Grants to support caring and inclusive neighbourhoods](#)

WA Labour Party

[Barnett Targets Homeswest Pensioners in Cruel Rent Hike](#)

[First Home Owner Grant Should Not Help Buy Homes in Peppermint Grove](#)

[WA Families the Biggest Losers](#)

[City of Perth You Ought To Be Congratulated](#)

[Latest Figures Reveal 700 Houses Sit Empty as 55000 Await a Home](#)

[Housing Strategy Overdue as Crisis Deepens](#)

[Barnett Government Must Use Billions to Help WA Battlers](#)

[Barnett Government Assault on Local Consultation Gathers Pace](#)



WA Greens Party

[Social Housing Initiative Spending](#)

[Our Aged Community is Growing but WA is not Planning for the Future - Greens Candidate for Willagee Hsien Harper](#)

[Affordable Housing NRAS and Housing Supply Council](#)

[Community Housing and Homelessness](#)

[Housing and Vacant Properties](#)

[Housing and Tax](#)

[COAG Reform and Sustainable Cities](#)

[Saving NRAS from the Floods](#)

In November last year Lynn Maclaren MLC asked questions on notice in Parliament relating to antisocial behaviour and community short stay accommodation. The Minister's answers were received recently and can be viewed here:

Antisocial behaviour: <http://www.lynnmaclaren.org.au/homeswest-housing-antisocial-behaviour>

Community short-stay accommodation: <http://www.lynnmaclaren.org.au/community-short-stay-accommodation-funding>

Australian Government

[Mental Health Reform Update](#)

[Gillard Government supports pay increase for Australia's lowest paid workers](#)

[Australia's pension system endorsed by OECD - The Hon Jenny Macklin MP](#)

[More than 200,000 requests for review - Commonwealth Ombudsman](#)

[Report reveals changing attitudes in Australian homes - The Hon Jenny Macklin MP](#)

[First annual report on the National Framework for Protecting Australia's Children - The Hon Jenny Macklin MP](#)

[Keeping up with the cost of living - The Hon Jenny Macklin MP](#)

[Attorney General's Department - New national register for domestic and family violence orders](#)

[Australian Health Survey Gets Under Way](#)

[Improving financial literacy in Indigenous communities - The Hon Jenny Macklin MP](#)

[Improved immigration detention outcomes for children and families - Commonwealth Ombudsman](#)

[National Transport Commission \(NTC\) - National urban policy a boost for our cities, says NTC](#)

[Productivity Commission Draft Report into long term disability care and support - The Hon Jenny Macklin MP](#)

[Minister Snowdon Opens Indigenous Research Forum](#)

[New approach to protection of vulnerable children - The Hon Jenny Macklin MP](#)

Useful links

Homelessness Australia [Newsletter](#)

[Community Housing Federation Australia](#)

[Tenants Advice Service WA](#)

[Housing Industry Association Ltd](#)

[Real Estate Institute of Australia \(REIA\)](#)

[Homeless Information Clearing House](#)

[Community Housing Coalition WA \(CHCWA\)](#)

[WACOSS](#)

[Australasian Housing Institute](#)

[Real Estate Institute of WA \(REIWA\)](#)

Shelter WA 2011 Newsletter & Update Publications

Shelter WA publishes a quarterly newsletter and monthly updates and welcomes your input. We accept articles, reports, new housing related and support services, and are happy to promote events, training etc.

The deadline for contributions for Shelter WA's April Update is **18 April**

If you have any questions or require further information contact Stephanie at Shelter on 9325 6660 or email cdpo@shelterwa.org.au .

For copies of Shelter WA's previous publications click on the following links to access [Updates](#) and [Newsletters](#)

About Shelter WA

Shelter WA is an independent community based peak organisation that is committed to the principle of safe, secure, appropriate and affordable housing for all people. Shelter WA has operated in Western Australia since 1979 and advocates on behalf of community groups and housing consumers. Shelter WA focuses on people who have low incomes or who are otherwise disadvantaged in the housing market. This includes people who are homeless or at risk of homelessness.

Shelter's role is to give an informed voice on housing policy issues based on sound research, collaboration, consultation, representation and research with housing consumers and community based organisations working with housing and related issues. We do this by: holding regular forums and consultations, conducting questionnaires and surveys in response to housing policy and practice issues; actively participating in government and community sector committees; by responding to queries and requests from the public; and, by informing and educating through the electronic circulation of regular newsletters, reports and fact sheets which are also made available on our website. We promote housing options for people on low incomes, including social housing (public housing and community housing), affordable housing provided through the private sector, and affordable home ownership.

Shelter WA is committed to the presence and extension of choice in the articulation of Government housing policy and therefore to the availability of a range of housing options for low income and special needs housing consumers.

If you wish to receive Shelter WA's Newsletters and Updates please click [Subscribe](#)

If you no longer wish to receive Shelter WA's Newsletters or Updates please click [Unsubscribe](#)